

G I P
P S L
A N D

CANNIBAL CREEK

1 Terroir

📍 Gippsland

📍 Victoria

📍 Australia

2017 CABERNET SAUVIGNON

HARVEST DETAILS

Date 14/4/17
pH 3.4
Baume 12.5
TA 6.8 gms/lit

TASTING NOTES

Hints of tobacco leaf and Christmas pudding.
The oak has imparted vanilla notes and structure to this wine.

WINE MAKING

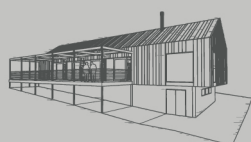
100% Cabernet Sauvignon
Winemaker and viticulturist Pat Hardiker Hand picked
French Oak (40% new)
100% malolactic fermentation
Small batch ferments and whole berries
No residual sugar
Cellar 10-15 years

VITICULTURE

Clone SA125
Cropping level 2 tonnes per acre
Trellis VSP
Granite soils
Planted Cabernet Sauvignon
1998

FIGURES

13.4% alc/vol
7.9 std drinks



260 Tynong North Road.
Tynong North, 3813, VIC
Australia
+613 5942 8380
wine@cannibalcreek.com.au