

G I P
P S L
A N D

CANNIBAL CREEK

1 Terroir

📍 Gippsland

📍 Victoria

📍 Australia

2016 SPARKLING BLANC DE BLANCS

HARVEST DETAILS

13/2/16

pH 3.2

Baume 10.6

TA 8gms/l

TASTING NOTES

Fresh and fruity, extended lees contact creates brioche, yeast characters and a creaminess to the palate, fine bead and a flinty finish.

WINE MAKING

100% chardonnay

No oak

Traditional method

Two to three years on lees

Dosage 7.3gms/l

VITICULTURE

Clone I10V1

Cropping level 2 tonne per acre Trellis VSP

Granite soils

Planted 1997

FIGURES

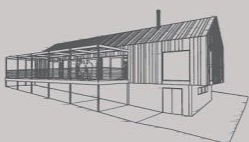
11%alc/vol

6.5 std drinks

AWARDS

SILVER Medal winner Gippsland Wine

Awards 2018



260 Tynong North Road.
Tynong North, 3813, VIC
Australia
+613 5942 8380
wine@cannibalcreek.com.au